

Streamlining Airport Operations: A Solution Brief for OnSite Mobile

Streamlining Airport Operations

Communication and Documentation Platform

Airport operations are a complex web of critical processes that demand flawless execution for both safety and efficiency. These processes rely on seamless reporting, distribution, resolution, and documentation of numerous unpredictable incidents and routine tasks. Delays or disruptions in information flow can lead to operational inefficiencies, increased costs, and compromised safety. To ensure smooth airport operations and compliance with strict regulations, effective management of these processes is essential.

Key challenges for airports

Manual processes

Traditional pen-and-paper methods or siloed systems create delays. Errors and prevent real-time communication.

Fragmented information sharing

Information is often trapped within departments or teams, making it difficult to gain situational awareness and coordinate a response.

Inefficient incident management

Slow and complicated processes for reporting, resolving and documenting incidents can escalate problems and impact safety.

Compliance challenges

Maintaining compliance with evolving regulations requires robust documentation and clear audit trails.

Interoperability

Due to the wide range of tools and user groups that need to interact with each other at an airport, interoperability is key.

Costs

Adequate financial resources must be made available to resolve discrepancies in communication and documentation without overstressing them.

OnSite Mobile is a comprehensive, operations-centric communication and documentation platform tailored to the management of airport operations. Available as both a native application and a web-based version, this platform is designed to improve real-time communication and operational efficiency across various activities.

Mobile and offline functionality: ensure seamless information flow and task management from anywhere on the airport, even in areas with limited connectivity.

Role-based access control: assign specific roles and permissions to users based on their function, ensuring data security and information access relevant to each team member.

Customisable categories: configure categories to manage a wide range of airport operations and incidents, including - operations (grass cutting, staff absences), operational incidents (A-VDGS outages), safety incidents (FOD, aircraft damage), wildlife incidents (wildlife control measures), occupational health and safety (accidents, violations)

Safety feed integration: include live feeds from CCTV cameras or other safety sensors to provide a holistic view of the operational environment.

Enhanced alert system: improve situational awareness with real-time notifications for:

- Weather and emergency
- VIP and special operations
- Arrivals
- ARFFS incident management
- New NOTAMs issuance

Push notifications: ensure timely updates by delivering critical information and alerts directly to relevant personnel based on category and urgency.

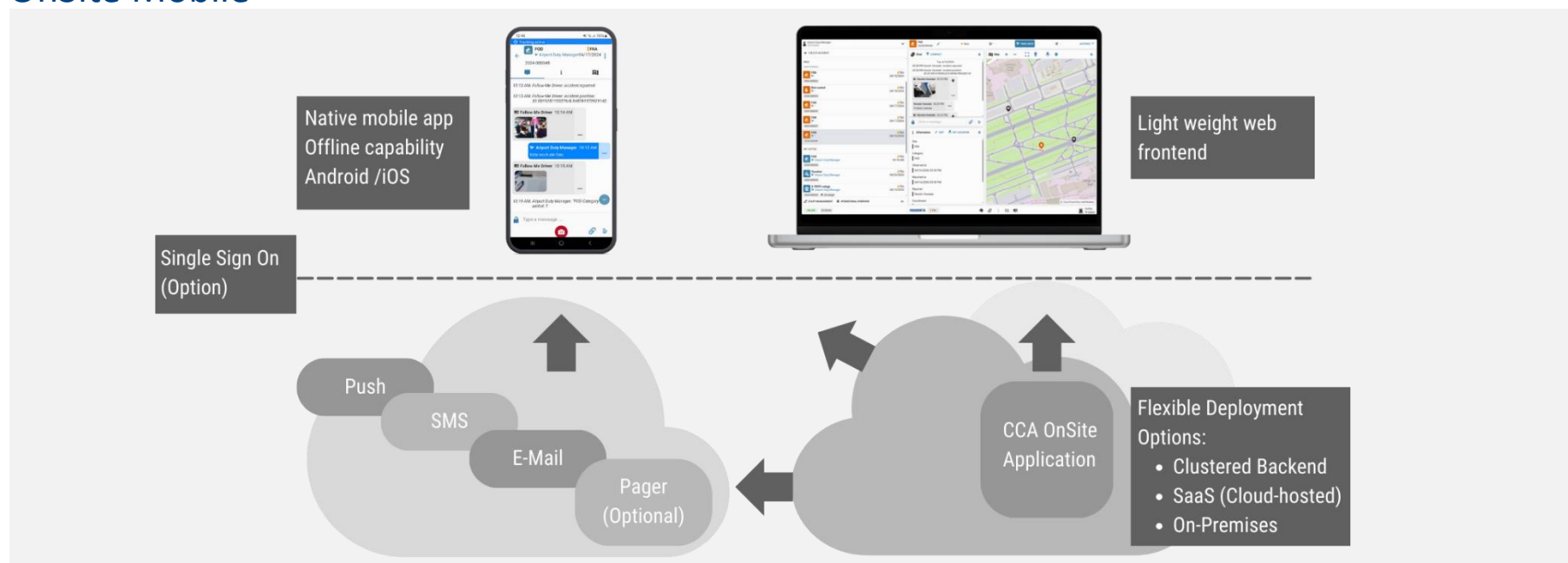
Interoperability with other airport tools: OnSite integrates seamlessly with existing airport management systems, creating a unified data hub for enhanced information sharing and streamlined workflows.

Break Down Silos, Boost Efficiency

By offering a unified platform for communication, documentation, and task management, OnSite eliminates information barriers between departments. With streamlined workflows, real-time information sharing, and mobile functionality empower personnel to react faster and work smarter, leading to significant efficiency gains.

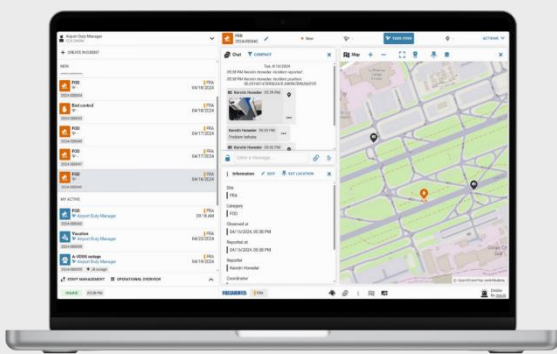


OnSite Mobile



Improved situational awareness

For better decision-making



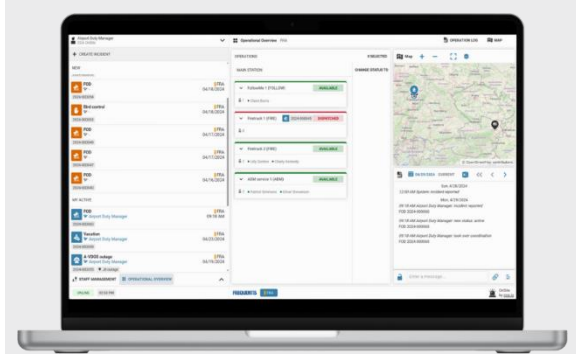
Improved safety

Through real-time information sharing and coordinated responses



Simplified compliance management

With clear audit trails



Mission-Centric Communication Improves Airport Operations

Increased operational efficiency and reduced response times:

streamlined communications and readily available data enable faster decision-making and coordinated incident response.

Improved situational awareness for better decision-making: real-time information sharing provides a clear picture of ongoing activities across the airport, enabling informed decisions to be made.

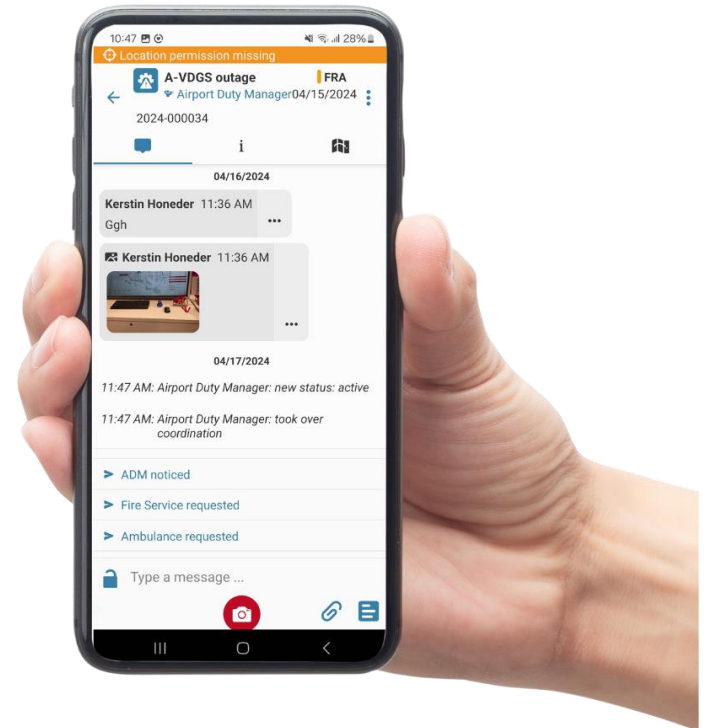
Streamlined operations and incident management, documentation, and reporting: a unified platform facilitates efficient operations and incident management, with clear documentation and reporting for improved future response strategies.

Simplified compliance management and clear audit trails: real-time data creates a transparent record of actions and decisions, simplifying compliance with safety regulations and fostering a culture of accountability.

Improved safety through real-time information sharing and coordinated responses: with everyone on the same page and with access to data, airport personnel can effectively mitigate risks and respond quickly to any incident, ultimately improving overall safety.

Streamlined Communication for Smarter and Safer Operations

OnSite is a comprehensive solution for streamlining airport operations. Its mobile-first design, customisable features and seamless integration capabilities empower airport staff to work smarter, safer, and more efficiently. With its intuitive interface and customisable features, it ensures seamless communication across all airport operations. This empowers staff to make faster, data-driven decisions, resulting in smoother operations and a more positive travel experience for everyone.

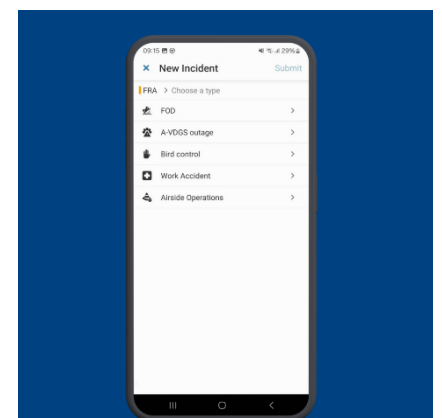


Seamless Integration for a Connected Airport

Mobile and offline functionality ensures uninterrupted communication and task management.

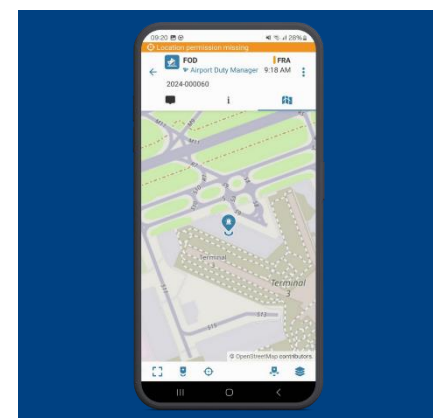
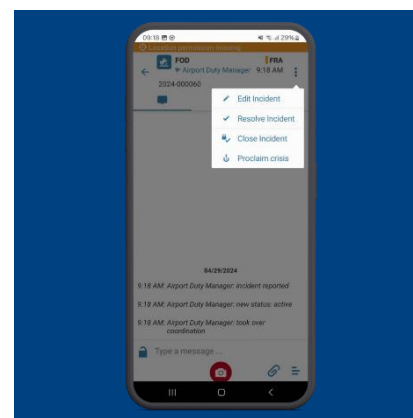
Role-based access control enhances data security and information relevance.

Customisable categories cater to the specific need of each airport operation.



Integrates seamlessly with existing airport tools and radio communication systems.

Offers the ability to incorporate live safety feeds for a holistic operation view.



OnSite Mobile

- Cloud
- Web and Mobile
- Data security
- Interoperability
- 24/7
- Real-time communication
- Operational efficiency
- Situational awareness
- Regulatory compliance
- Incident management
- Administration of resources
- User and resource tracking
- Automatic incident creation
- Operations – and incident log
- Map
- Procedure tab
- Alerting and notifications